



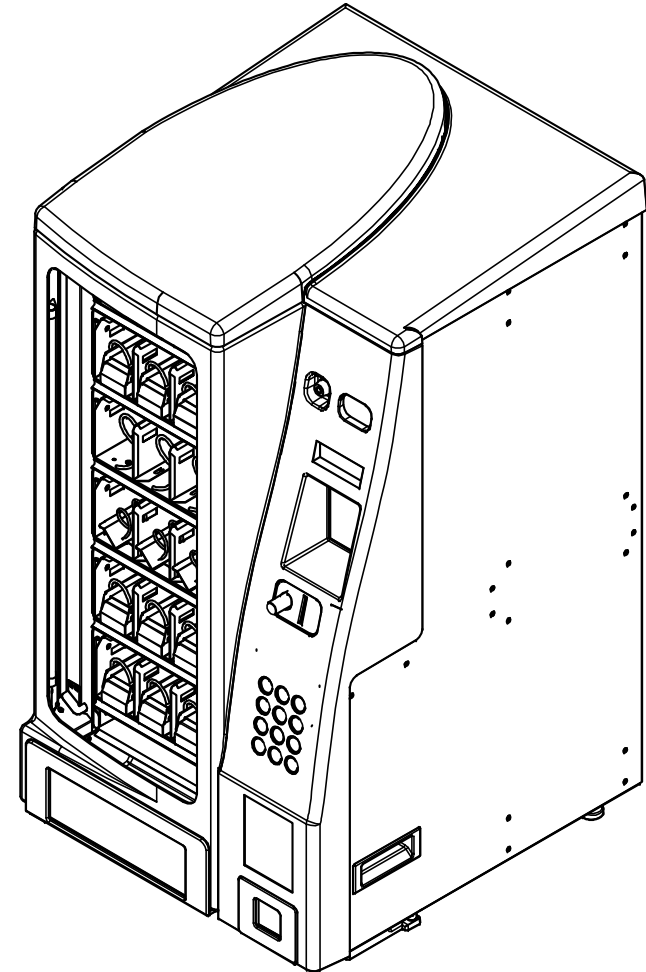
ILLUSTRATED PARTS MANUAL, AMS MV-XYX

MicroVend™

L0183 REV. C

AUTOMATED MERCHANDISING SYSTEMS INC
255 WEST BURR BLVD.
KEARNEYSVILLE, WV 25430
304-725-6921 - Fax 304-725-6983

info@amsvendors.com
www.amsvendors.com



INTERNATIONAL A.M.S. S DE RL DE CV
KM. 9 CARR. AL CASTILLO NO. 8200
MPIO. DE EL SALTO, JAL. MEXICO 45680
5233-3-6-88-07-17 - Fax 5233-3-6-88-13-14

www.amsint.com.mx
servicio@amsint.com.mx

Illustrated Parts Manual, AMS MV-XYX

MicroVend™

Table of Contents

<u>SECTION</u>	<u>PAGE</u>
INTRODUCTION	
General Introduction	5
Manual Organization	5
Merchandiser Identification	6
Patent Disclosure	7
Publication Notice	7
CABINET	8
CONTROL BAY	12
DOOR	16
ELECTRICAL BOX	18
TRAY	20
HELIX	24
ELECTRICAL HARNESSSES	26

THIS PAGE INTENTIONALLY LEFT BLANK

GENERAL INTRODUCTION

The purpose of this manual is to give our customers a way of identifying major service parts for repair and replacement. The illustrations and parts list in this manual are for identification.

Illustrations of these major parts are keyed with our part numbers. The illustrations help identify the general design, position and orientation of these parts. The note section may also give important information.

Please refer to the section on merchandiser identification on the following pages. Without the model style and serial number it may be difficult to identify the required part.

Parts should be ordered from your distributor.

It is our intent to assist our customers with up-to-date documentation. However, this manual may not show all parts, variations or changes. Some parts may be shown out of scale. This manual is itself subject to change without notice. If any errors are found, please notify AMS so the correction can be included in later revisions. Engineering data and third party information are generally not included. The graphical data, group assembly data, parts, part assembly, parts breakout information and tabular data conveyed by this manual is proprietary and belongs to AMS, and holders without prior consent of or without knowledge of and by AMS must surrender this data immediately.

All measurements are in inches except where specified as Metric.

MANUAL ORGANIZATION

This manual is divided into general sections. Each section is further divided into the various subsections or subassemblies. These lead off with one or more illustrations showing the parts and each part is identified with a number. Note that some part numbers are for assemblies fabricated as a unit at AMS and are replaceable only as a unit. Also, other part numbers identify optional parts which may or may not have been contracted for and factory installed by AMS.

After the illustrations, the item number in the illustration is paired with part number and name for that part. In some instances there may be multiple parts to choose from. However, the correct service or repair part for the style of merchandiser must be selected. There is a note section where additional information may be found. A quantities column in the list indicates quantities required.

There is a note section where additional information may be found.

This manual contains additional and new information for a merchandiser as currently manufactured. Older revisions of this manual should be kept with older merchandisers.

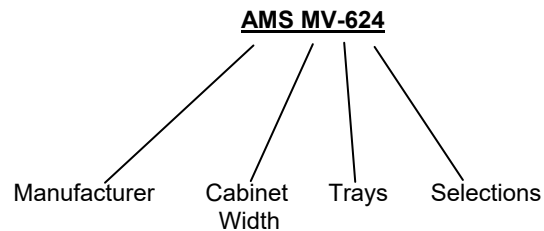
MERCHANDISER IDENTIFICATION

When requesting service, replacement parts or technical assistance, please use the **Model Number** and the **Serial Number with Date Code**, found on the Serial Plate (See **Fig. 1** below) affixed to the merchandiser. The plate is usually located inside the window. The information contained on this plate is necessary to determine what parts, kits, or maintenance apply to your vendor.



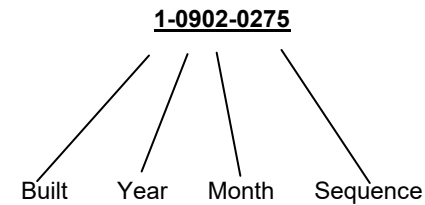
Fig. 1 Typical Serial Plate

Model Number Breakdown



AMS MV-624 means this vendor is an Automated Merchandising Systems merchandiser **MicroVend**, with six (**6**) trays making available twenty four (**24**) positions for different products.

Example of Serial Number Breakdown



On all AMS serial numbers, the first digit identifies where a merchandiser was manufactured. Those merchandisers built in the U.S. start with the number **1**. Those merchandisers built in Mexico start with the number **2**.

The next two digits identify the year of manufacturer. These numbers are **19** for (2019) and so forth.

The next two digits identify the month. The first month of the year is **01** and the last month is **12**.

The last four digits identify the numbers assigned to each merchandiser during assembly. Numbering starts with **0001** and continues through **9999**, whereupon these four digits start over. An example of the numbering system in use is as follows:

1-1902-0275 is translated as U.S. built, manufactured in 2019, month of February, and was the 275th manufactured.

PATENT DISCLOSURE

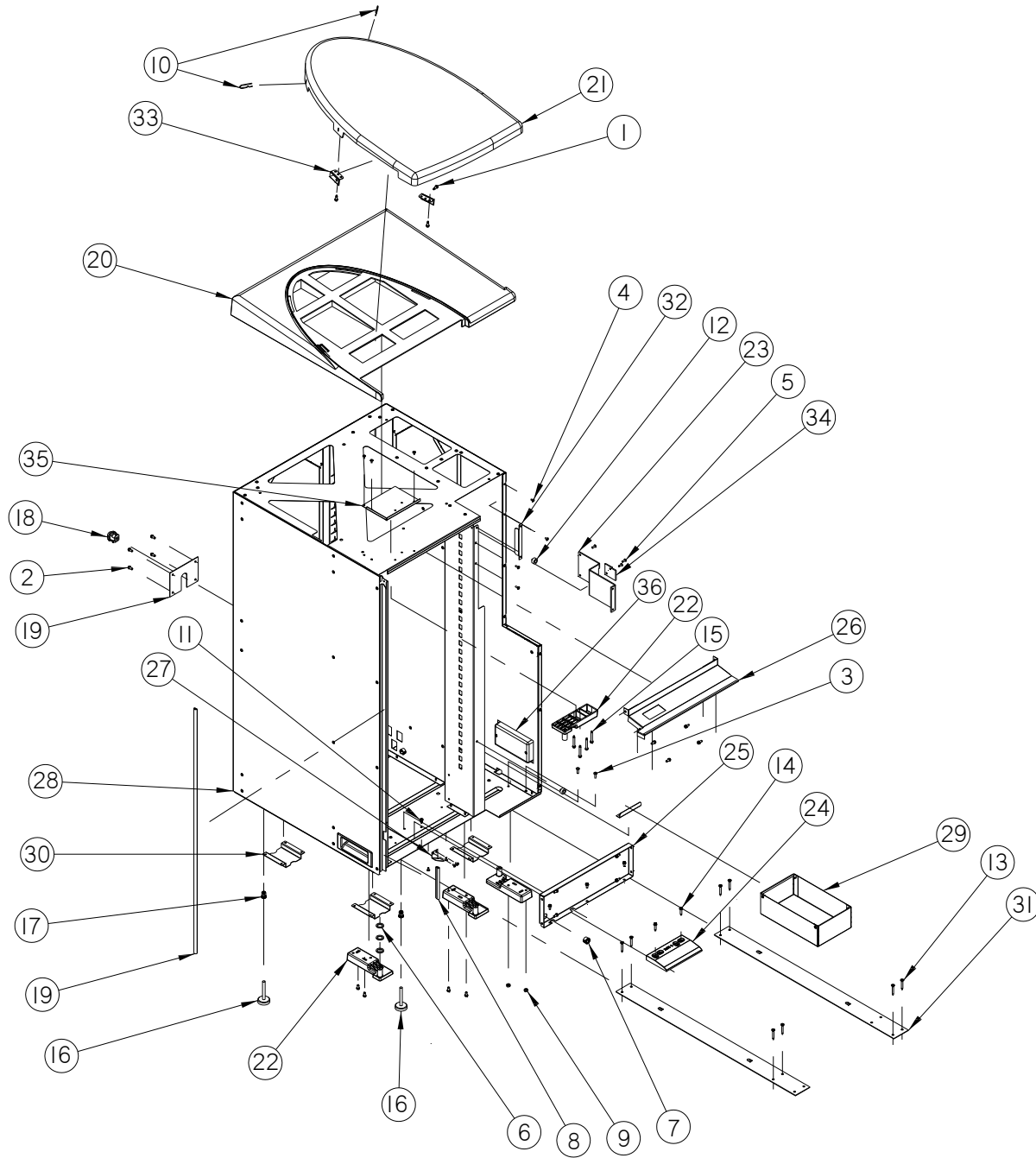
This merchandiser and/or certain of its components are covered by one or more of the following U.S. and international patents;

U.S. PATENTS: 6,145,699; 6,520,373

PUBLICATION NOTICE

It is our intent to assist our customers with up-to-date documentation: however, this manual may not contain all updates and is subject to revision without notice. Please contact our Service Department with your requests or comments.

CABINET



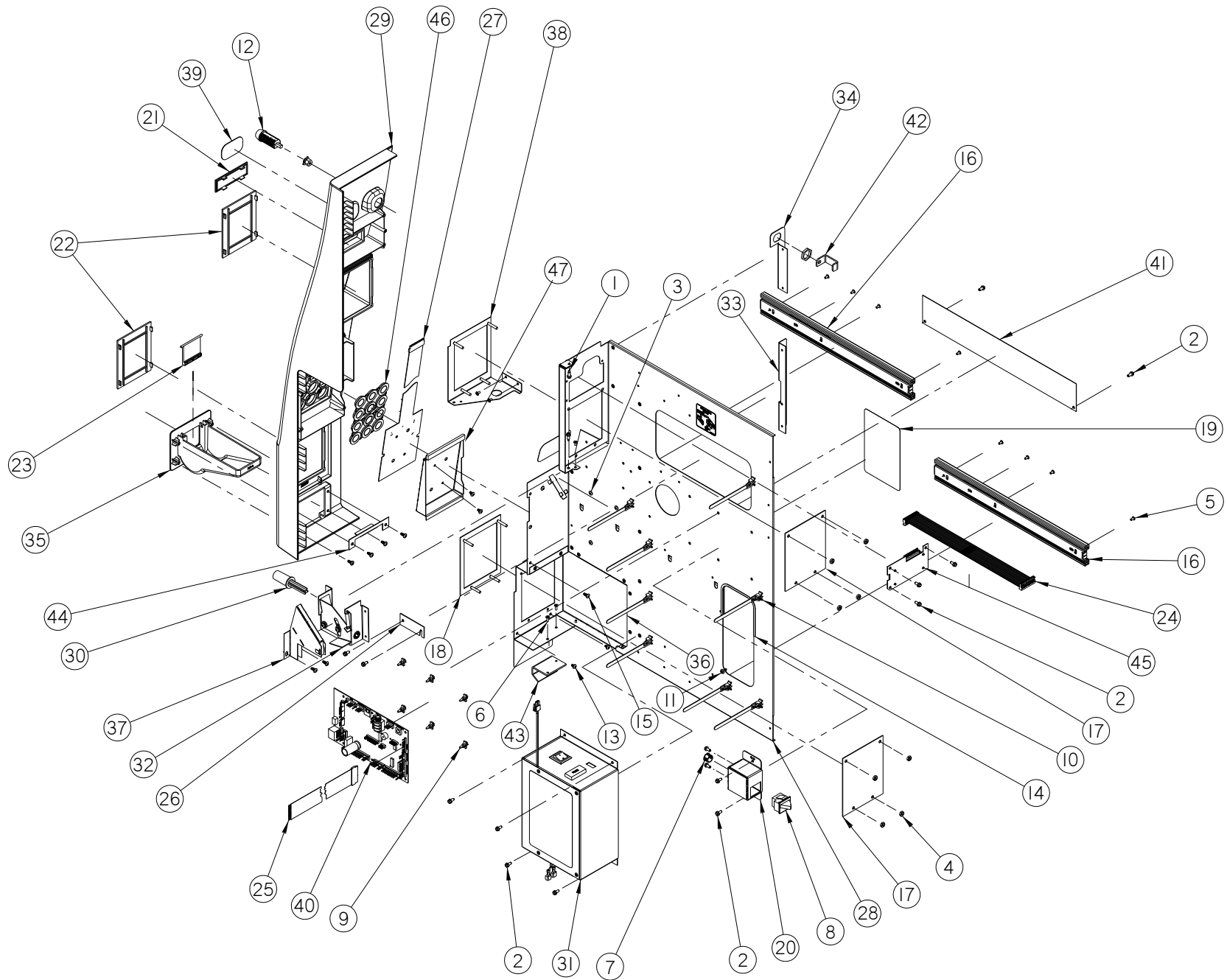
CABINET

ITEM	PART NO.	PART DESCRIPTION	QTY.	NOTES
1	3000	Screw, Sheet Metal, Tek 8-18 (1/2")	1	
2	3001-03	Screw, Sheet Metal, Type B, 8-18 (3/8" long)	3	
3	3002-04	Screw, Machine, Type F 8-32	2	
4	3009-02	Steel Rivet, 1/4" Grip Length 1/8"	3	
5	3009-04	Steel Rivet, 3/8" Grip Length 1/4"	2	
6	3023-15	Washer, Flat Nylon, 1/2, .505 x .750 x .062	3	
7	3029-02	Bushing, Open/Closed, .390 ID X .562 OD	1	
8	3055	Edge Trim, Pre-Glued (.313')	—	
9	3060-08	Nut, Self-Locking, Machine, #8-32	2	
10	3079	Hair Pin, Compressor Mounting	2	
11	3084-03	Screw, SEMS, 8-32, 3/8"	1	
12	3210	Bumper, Rivet Insert	1	
13	3241-10	Screw, #6 Drywall, 1 1/4" Length	8	
14	3342-06	Screw, Sheet Metal, TEK 8-18, 3/4", Clear Zinc	2	
15	3342-10	Screw, Sheet Metal, TEK 8-18, 1 1/2", Clear Zinc	4	
16	30052	Leg, Leveling, 1/4" - 20	2	
17	3740-12	Rivet Nut, English Thread, 1/4" - 20	2	
18	3908	Right Angle Strain Relief	1	
19	26009	Rear Cover Plate, Gem	1	
20	26211	Top, Cabinet, MicroVend	1	
21	26229	Top Cap, Cabinet, MicroVend	1	

CABINET				
ITEM	PART NO.	PART DESCRIPTION	QTY.	NOTES
22	26233	Foot/ Hinge Pin, MicroVend	4	
23	26236	Lock Latch, MicroVend	1	
24	26243	Ramp, Door, MicroVend	1	
25	26246	Stiffener, MicroVend	1	
26	26250	Top Stiffener, MicroVend	1	
27	26608	Kicker, Cabinet, MicroVend	1	
28	26632	Assy., Cabinet, MicroVend	1	
29	26637	Assy., Coin Box, MicroVend	1	
30	26718	Bracket, Anchor, MicroVend	4	
31	26719	Strap, MicroVend	2	
32	26939	Bracket, Escutcheon Alignment, MicroVend	1	
33	26942	Bracket, Top Cap, MicroVend	2	
34	26943	Plate, Lock Latch, MicroVend	1	
35	26951	Tap Plate, Hinge, MicroVend	1	
36	30018	Handle, Pocket Pull Flush	2	

THIS PAGE INTENTIONALLY LEFT BLANK

CONTROL BAY



CONTROL BAY

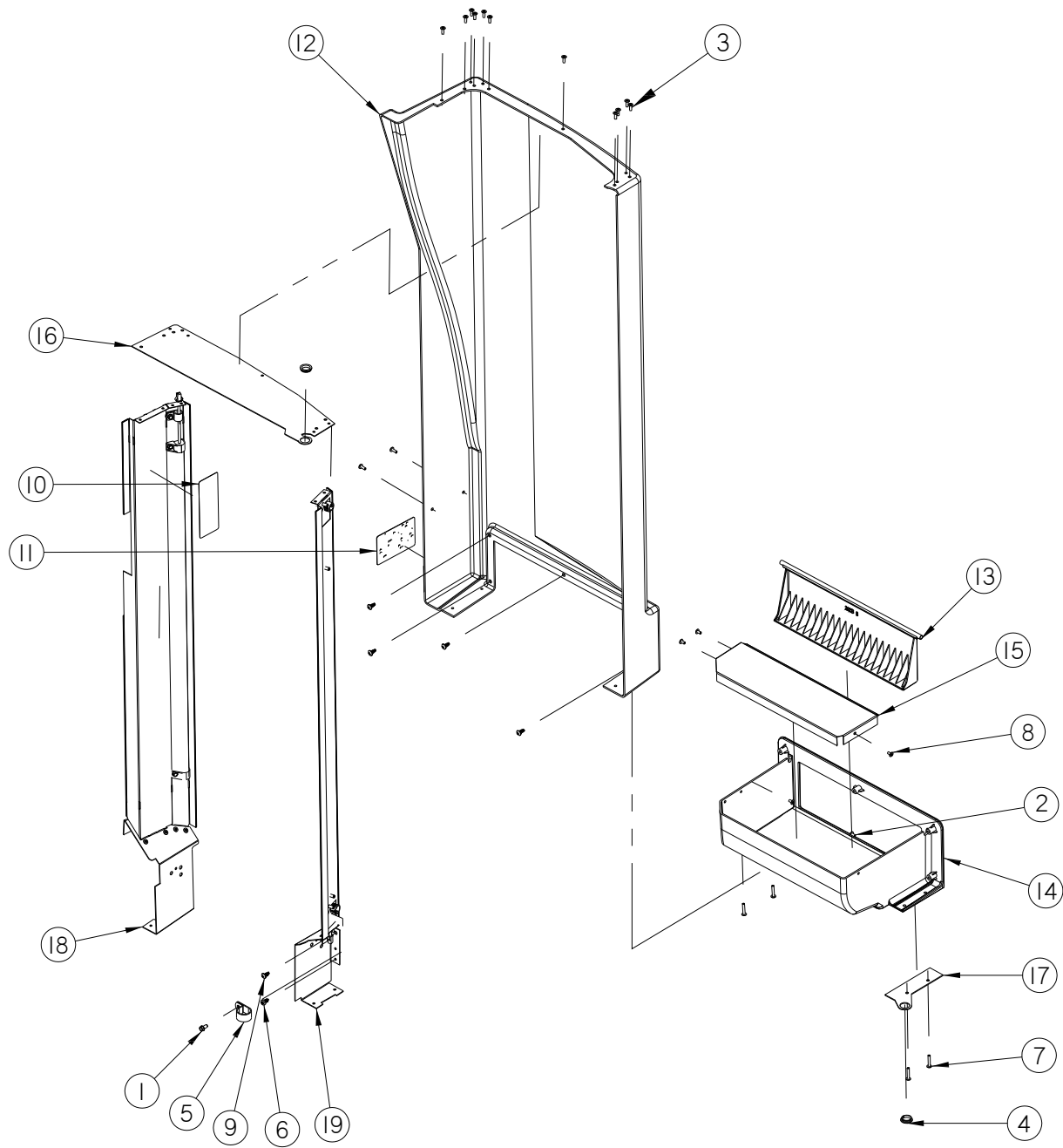
ITEM	PART NO.	PART NAME	QTY.	NOTES
1	3000	Sheet Metal Screw TEK #8-18	2	
2	3001-03	Screw, Sheet Metal, Type B, 8-18 (3/8" long)	25	
3	3002-04	Screw, Machine, Type F, 8-32, 1/2	3	
4	3006-08	Nut, Hex, Machine Screw, #8-32	8	
5	3009-02	Rivet, Steel, Blk., 1/8"-Grip 1/8"	30	
6	3009-04	Rivet, Steel, Blk., 1/8"-Grip 1/4"	2	
7	3029-02	Bushing, Open/Closed, .390 ID X .562 OD	1	
8	3036	Switch, Panel Mount Rocker, Normally Closed	1	
9	3037-01	PC Board Support (3/16")	6	
10	3081	Wire Tie, 0.250 Panel Mount	8	
11	3084-03	Screw, SEMS, 8-32, 3/8"	1	
12	3235-01	Lock w/ Position Cam & Mounting Hardware, Includes two keys (Keyed to 3235-02/ 3078-02 - R74526)	1	
	3235-04	Lock w/ Position Cam & Mounting Hardware, Include two keys (Keyed to 3235-05 - R50199)	1	
13	3289-02	Screw, Type B, No. 8, Pan Head Phillips	2	
14	3693	Grommet, Edging, Polyethylene, Blk. (.75)	—	
15	3746-03	Screw, 8-16, Tri-Lobe for Plastic, 3/8" (Phillips)	8	
16	3996	Slide, Full Extension, 16" (1 pair)	1	
17	20181	DBV Cover Plate	2	
18	20344	Assy., DBV Mounting Bezel	1	
19	21325	Decal, Warning, Tray Extension, English/Spanish	1	
20	21690	Enclosure, Door Switch, Ver.2	1	
21	22175	Lens, Escutcheon, GFM, Ver.2	1	
22	22184-02	Cover, DBV, Plastic Escutcheon, Classic Silver, Ver.2	1	
23	23370-02	Door, Plastic Coin Cup, Classic Silver	1	
24	24015-01	Harness, Display, 23" Long	1	

CONTROL BAY

ITEM	PART NO.	PART DESCRIPTION	QTY.	NOTES
25	24578	Harness, keypad Extension, Epoch	1	
26	24897	Strap, Strain Relief, Display, Epoch	1	
27	25688	Assy., Keypad, MicroVend	1	
28	26208	Changer Mounting Panel, MicroVend	1	
29	26209	Escutcheon, MicroVend	1	
30	26216	Scavenger Button, MicroVend	1	
31	26218	Assy., Elec. Box, MicroVend, 120V	1	
	26218-01	Assy., Elec. Box, MicroVend, 240V	1	
32	26225	Assy., Scavenger System, MicroVend	1	
33	26226	Bracket, Bottom, Escutcheon Support, MicroVend	1	
34	26227	Bracket, Top, Escutcheon Support, MicroVend	1	
35	26228	Coin Cup, MicroVend	1	
36	26240	Support, Lower DBV, MicroVend	1	
37	26652	Assy., Coin Chute, MicroVend	1	
38	26653	Assy., Support, DBV, MicroVend	1	
39	26715	Decal, AMS Logo, MicroVend	1	
40	28500	Control Board, S3, Direct Temp Input	1	
41	26944	Cover, Keypad Harness, MicroVend	1	
42	26954	Lock Latch, MicroVend	1	
43	26971	Coin Door Stop, MicroVend	1	
44	26972	Coin Door Stop, Top, MicroVend	1	
45	26973	Assy., Display, MicroVend	1	
46	27473	Braille Button Matrix	12	
47	26249	Membrane Switch Mounting Plate, MicroVend	1	

THIS PAGE INTENTIONALLY LEFT BLANK

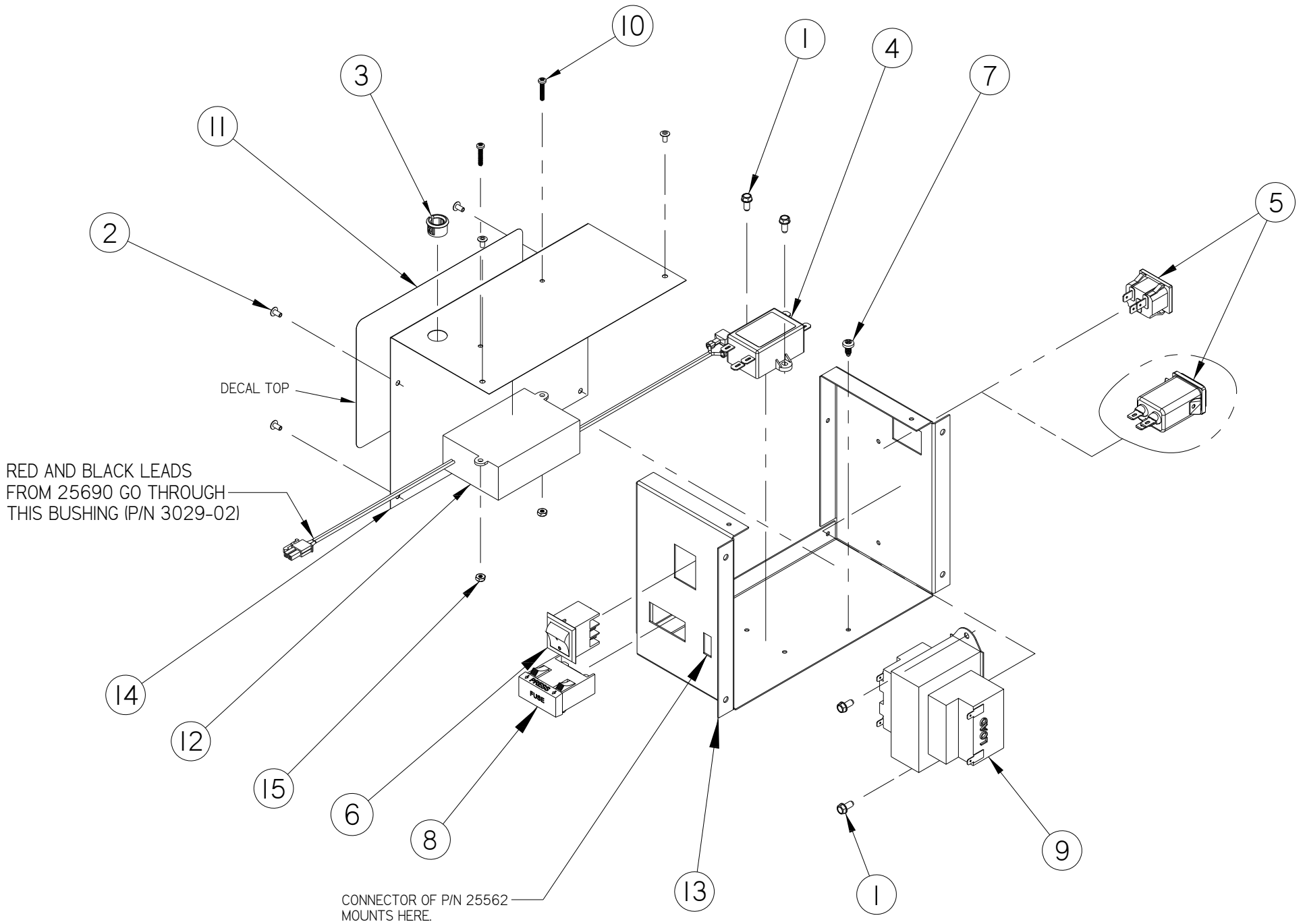
DOOR



DOOR

ITEM	PART NO.	PART NAME	QTY.	NOTES
1	3001-03	Screw, Sheet Metal, Type B, 8-18 (3/8" long)	1	
2	3009-02	Rivet, Steel, Blk., 1/8"-Grip 1/8"	2	
3	3009-04	Rivet, Steel, Blk., 1/8"-Grip 1/4"	13	
4	3015-08	Bearing, Nyliner Snap-In, 1/2" Shaft x .078	2	
5	3024-12	Cable Clamp, Black Nylon, 3/4" Dia.	1	
6	3084-03	Screw, SEMS, 8-32, 3/8"	1	
7	3156-10	Rivet, Aluminum, 1/8", Natural (5/8" Grip)	4	
8	3448-03	Rivet, Steel, 1/8" H.R., 3/8" Lg.	3	
9	3746-03	Screw, 8-16, Tri-Lobe for Plastic, 3/8" (Phillips)	5	
10	21594-50	Serial Plate AMS (WV), 120V	1	
	21594-62	Serial Plate AMS (WV), 120V Keeper	1	
	21594-68	Serial Plate AMS (WV), 120V Non-CE	1	
11	21625	Decal, Cleaning, Plastic Door Doubler	1	
12	26210	Door, Main, MicroVend	1	
13	26213	Vend Door, MicroVend	1	
14	26230	Hopper, MicroVend	1	
15	26232	Cap, Hopper, MicroVend	1	
16	26237	Top, Main Door, MicroVend	1	
17	26239	Hinge, Bottom, MicroVend	1	
18	26638	Assy., Right LED, MicroVend	1	
19	26639	Assy., Left LED, MicroVend	1	

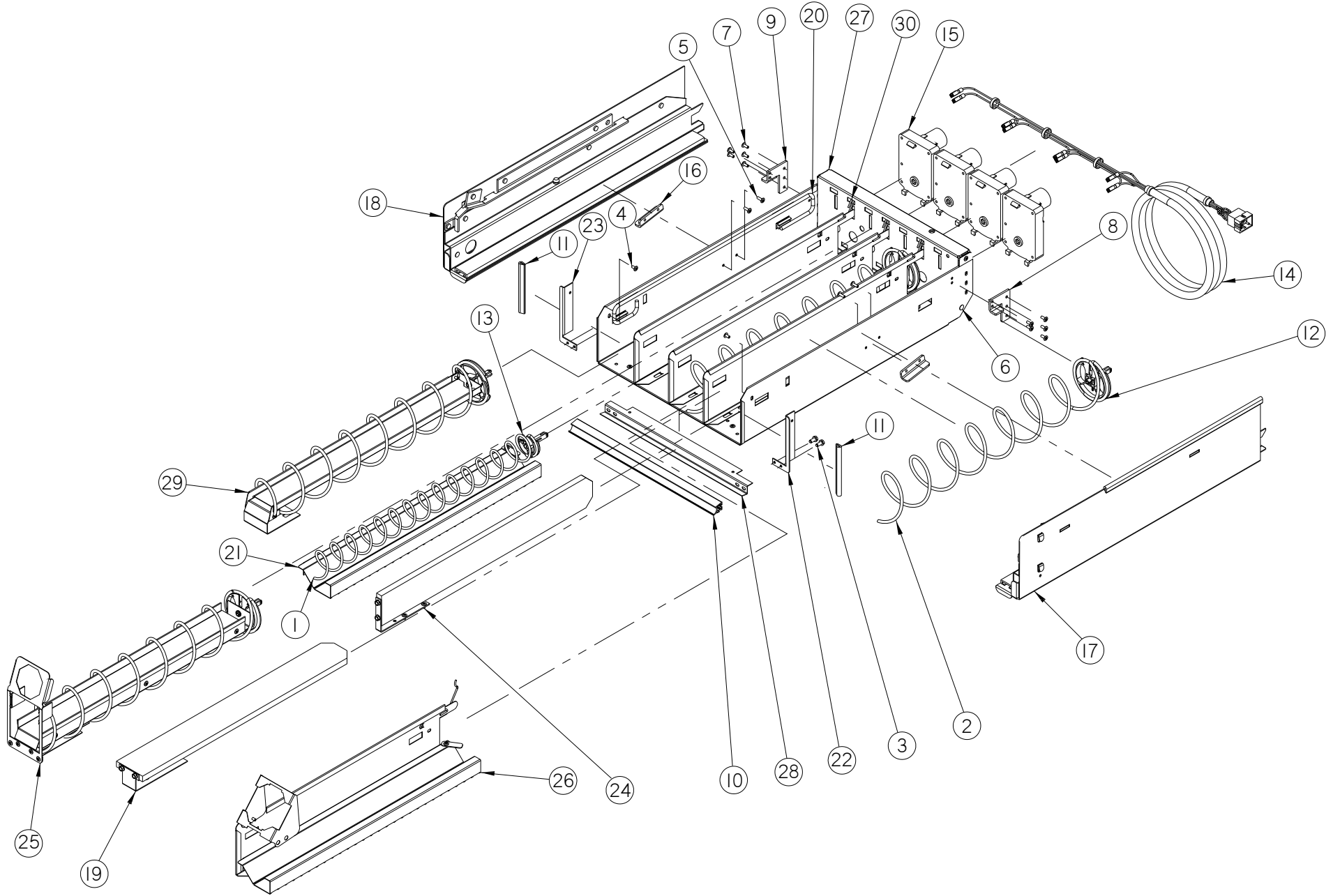
ELECTRICAL BOX



ELECTRICAL BOX

ITEM	PART NO.	PART NAME	QTY.	NOTES
—	26218	Assembly, Electrical Box, MicroVend	1	
1	3001-03	Screw, Sheet Metal, Type B, 8-18 (3/8" long)	4	
2	3009-02	Rivet, Steel, Blk., 1/8"-Grip 1/8"	6	
3	3029-02	Bushing Open/Closed	1	
4	3030	Filter, RFI, 5A	1	120V Option Only
5	3057	Panel Mount, Inlet, IEC	1	120V Option
	3827	Power Entry Module	1	240V Option
6	30084	Switch, Rocker, On/Off	1	
7	3084-03	Screw, SEMS, 8-32, 3/8"	1	
8	3133-30	Assy., (1) Fuse Holder and (2) Fuses, 3.0 amp	1	
9	3257	Transformer, Class II, 120V/24V	1	120V Option
	3258	Transformer, Class II, 230V/24V	1	240V Option
10	3414-06	Screw, 4-40, Phillips Head, Trilobe 5/8 LG	2	
11	27411	Decal, Warning, Snack, English/Spanish/ French	1	
12	25690	Harness, Power Supply, 12VDC	1	120V Option
	27913	Harness, Power Supply, 12VDC, W/Ferrites	1	240V Option
13	26217	Electrical Box, MicroVend	1	
14	26940	Bracket, Cover, Electrical Box, MicroVend	1	
15	3060-04	Nut, Self-Locking, Machine, #4-40	2	

TRAY



TRAY

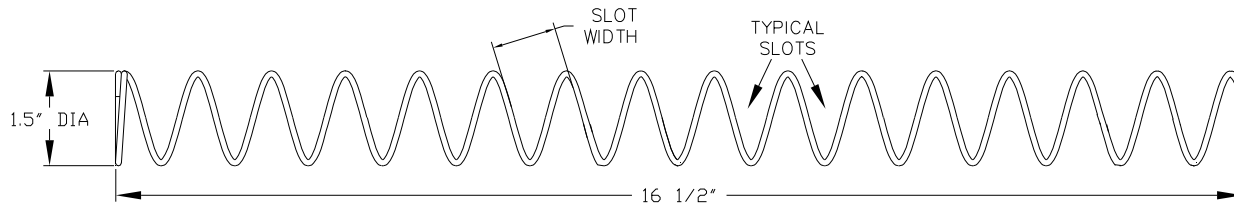
ITEM	PART NO.	PART NAME	QTY.	NOTES
—	26203	Assembly, Tray, MicroVend	1	
1	—	Helix, Small (1.5") Counter Clockwise, Painted		See Helix Description Section for Options
2	—	Helix Small (2-5/8) Counter Clockwise, Painted		
3	3001-03	Screw, Sheet Metal, Type B, 8-18 (3/8" long)	4	
4	3009-02	Rivet, Steel, Blk., 1/8"-Grip 1/8"	2	
5	3009-04	Rivet, Steel, Blk., 1/8"-Grip 1/4"	4	
6	3019	Canoe Clip	2	
7	3295-03	Rivet, Steel, 1/8", Plated	10	
8	20073	Tray Stop, Right	1	
9	20073-01	Tray Stop, Left	1	
10	20465-09	Extrusion, Price Marker, Reduced Height (11.1)	1	
11	20796-01	Edge Trim, Tray Corner, 3.25	2	
12	20966	Helix Adaptor, w/o Hub	4	Optional
13	21206	Helix Adapter, 1.5" Helix Tray	4	Optional
14	21584	Harness, 1.5" Helix Tray	1	
15	23007	Motor w/ Home Circuit, CCW	4	Optional
	23007-01	Motor w/Home Circuit, CW	4	
	23007-04	Motor w/ Home Circuit, CCW, Varistor Installed	4	
	23007-05	Motor w/Home Circuit, CW, Varistor Installed	4	
16	23471	Tray Stop, Intermediate, Slim	2	
17	23545	Assembly, Rail, Right, Slim	1	

TRAY

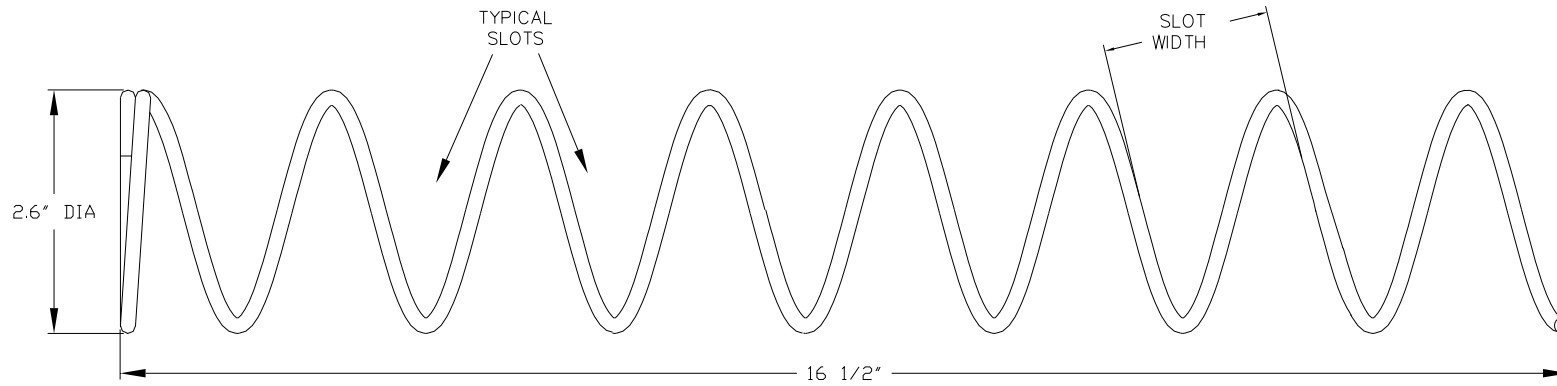
ITEM	PART NO.	PART DESCRIPTION	QTY.	NOTES
18	23546	Assembly, Rail, Left, Slim	1	
19	23967	Kit, Cup Rail, Small Helix, Slim	1	Optional
20	23968	Kit, Candy Pusher, Slim	1	Optional
21	24046-01	Kit, Mini-Dispenser, Slim	4	Optional
22	24050	Tray Corner, Narrow, Right, Slim	1	
23	24050-01	Tray Corner, Narrow, Left, Slim	1	
24	24058	Kit, Helix Splitter, Slim	1	Optional
25	25757	Assy., POS Display w/ Rail, K-Cup, Slim Gem	1	Optional
26	25763	Assy., Kit, Tassimo T-Disk, Slim Tray	1	Optional
27	26201	Tray Body, MicroVend	1	
28	26222	Tray Doubler, MicroVend	1	
29	26966	Assy., Tray Rail, K-Cup, MicroVend	4	Optional
30	26969	Assy., Tray Divider, MicroVend	3	

THIS PAGE INTENTIONALLY LEFT BLANK

HELIX



TYPICAL 1.5 HELIX



TYPICAL SMALL HELIX

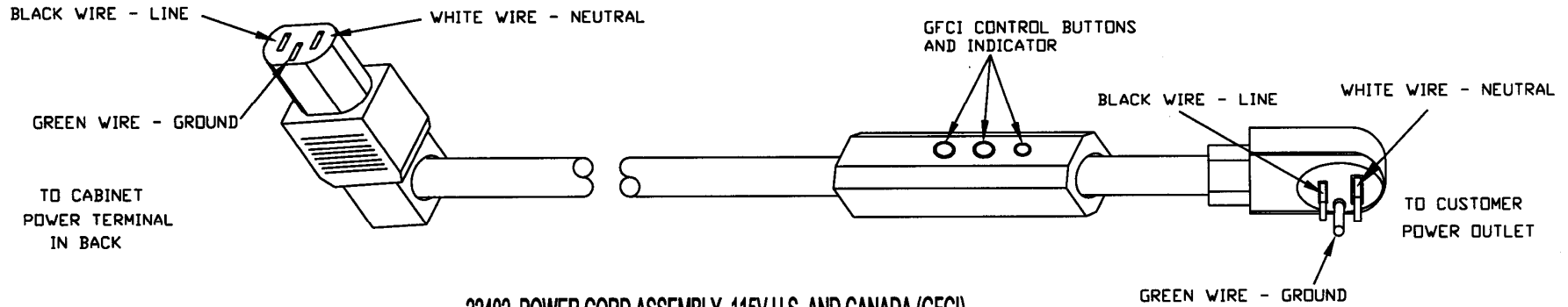
HELIX

PART NO.	HELIX DESCRIPTION *	SLOT (VEND) WIDTH	NUMBER OF SLOTS (PITCH)	HELIX OUTSIDE DIAMETER	TURNS	QTY. PER COLUMN	NOTES
23549-03	Helix, 2.6", CCW, Black	3 5/8	3	2.6	CCW	1	
23549-04	Helix, 2.6", CCW, Black	3 1/8	4	2.6	CCW	1	
23549-05	Helix, 2.6", CCW, Black	3	5	2.6	CCW	1	
23549-06	Helix, 2.6", CCW, Black	2 1/4	6	2.6	CCW	1	
23549-07	Helix, 2.6", CCW, Black	2	7	2.6	CCW	1	
23549-08	Helix, 2.6", CCW, Black	1 3/4	8	2.6	CCW	1	
23549-11	Helix, 2.6", CCW, Black	1.5	11	2.6	CCW	1	
23549-13	Helix, 2.6", CCW, Black	1 3/16	13	2.6	CCW	1	
23549-17	Helix, 2.6", CCW, Black	1	17	2.6	CCW	1	
24031-03	Helix, 2.6", CW, Black	3 5/8	3	2.6	CW	1 Set	Use With 23549-03 To Couple Motors
24031-04	Helix, 2.6", CW, Black	2 3/4	4	2.6	CW	1 Set	Use With 23549-04 To Couple Motors
24031-05	Helix, 2.6", CW, Black	3	5	2.6	CW	1 Set	Use With 23549-05 To Couple Motors
24031-07	Helix, 2.6", CW, Black	2	7	2.6	CW	1 Set	Use With 23549-07 To Couple Motors
24031-08	Helix, 2.6", CW, Black	1 3/4	8	2.6	CW	1 Set	Use With 23549-08 To Couple Motors
24031-10	Helix, 2.6", CW, Black	1 3/8	10	2.6	CW	1	
24061-07	Helix, 1.5", CCW, Black	2	7	1.5	CCW	1	Use With Mini-Dispenser Kit 24026-01
24061-14	Helix, 1.5", CCW, Black	1 1/8	14	1.5	CCW	1	Use With Mini-Dispenser Kit 24026-01
24061-23	Helix, 1.5", CCW, Black	5/8	23	1.5	CCW	1	Use With Mini-Dispenser Kit 24026-01

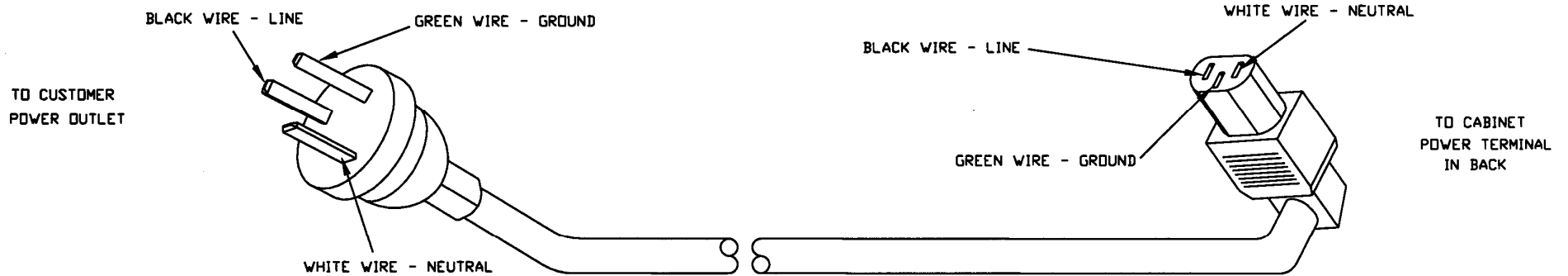
*Contact your distributor for special helix diameters and pitch. Contact AMS for your application.

ELECTRICAL HARNESSES

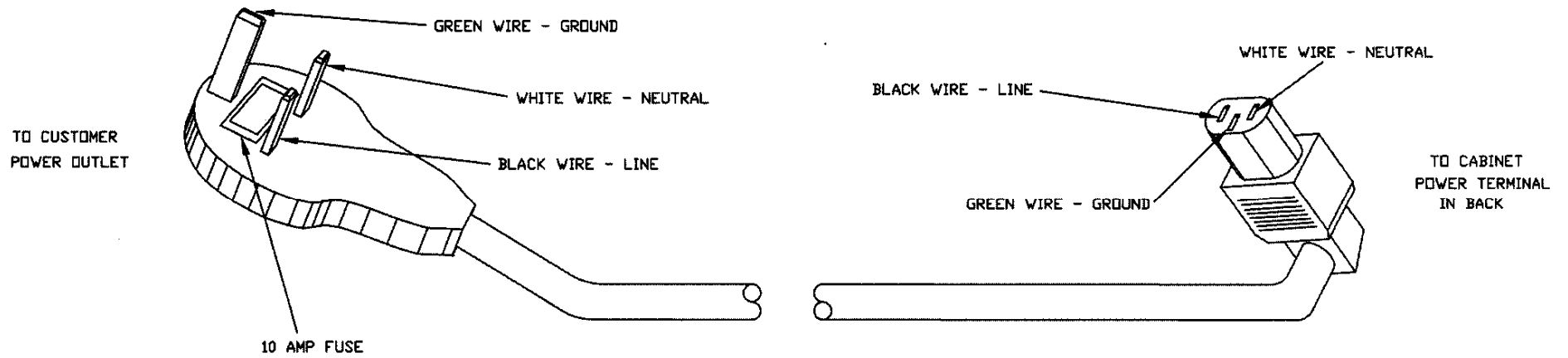
POWER CORD HARNESSES:



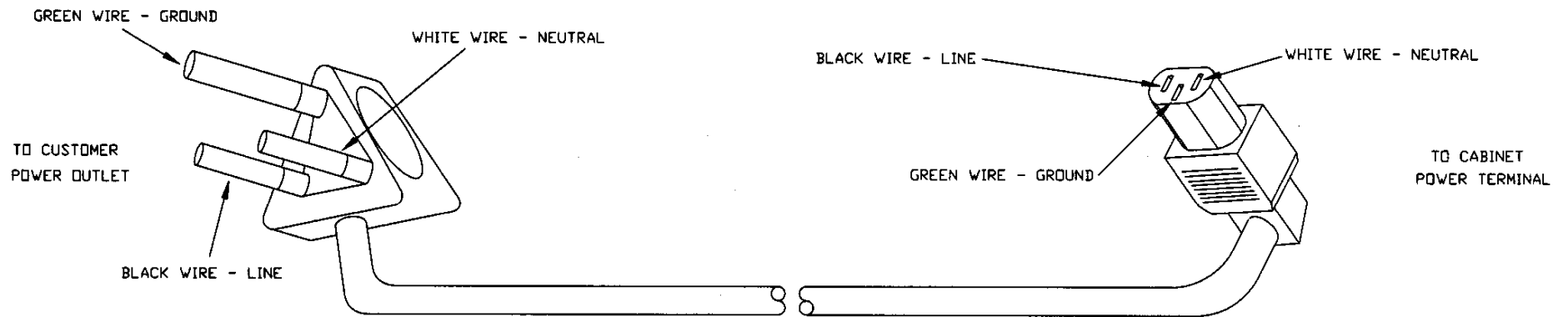
22402, POWER CORD ASSEMBLY, 115V U.S. AND CANADA (GFCI)



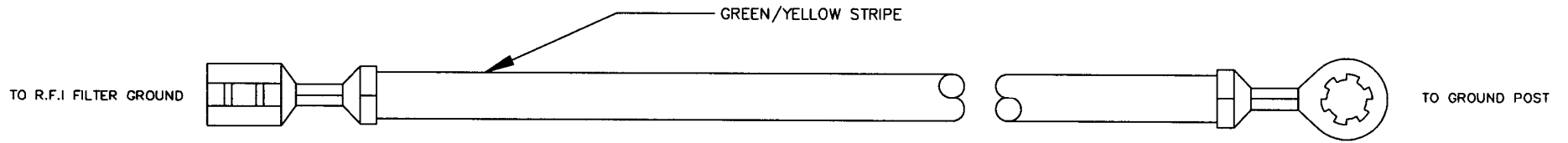
3173, POWER CORD, AUSTRALIA



3194, POWER CORD, U.K. & IRELAND



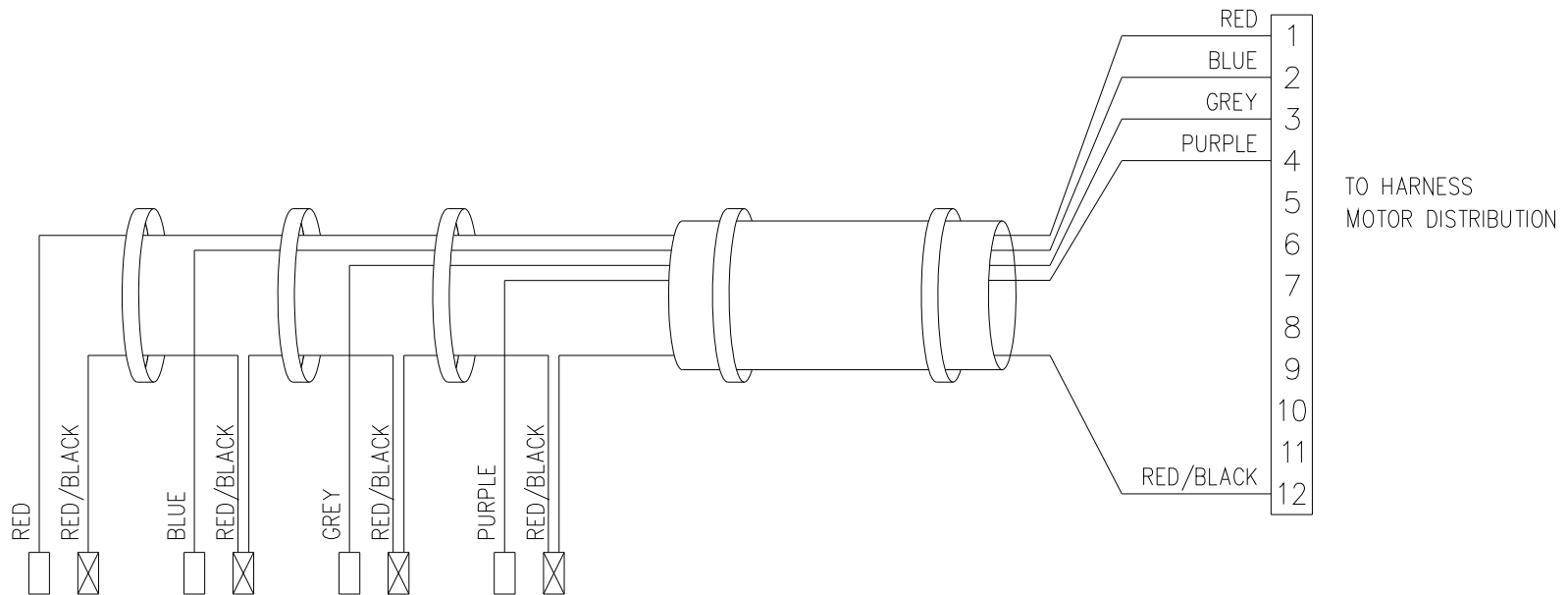
3208 POWER CORD, INDIA AND SOUTH AFRICA



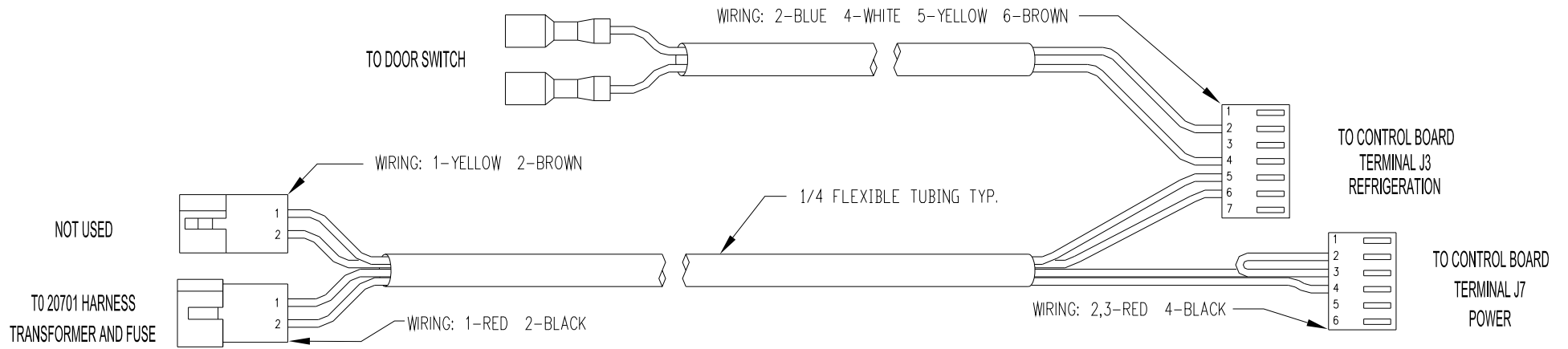
20154, HARNESS, R.F.I. FILTER GROUND



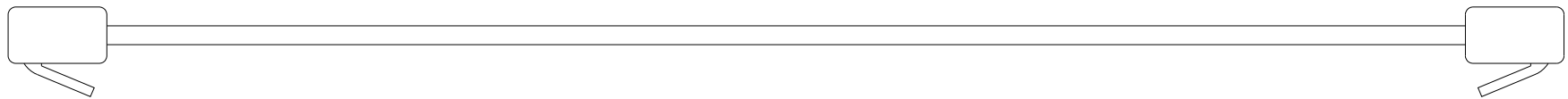
20158, HARNESS, MULTI-DROP BUSSTATION 1



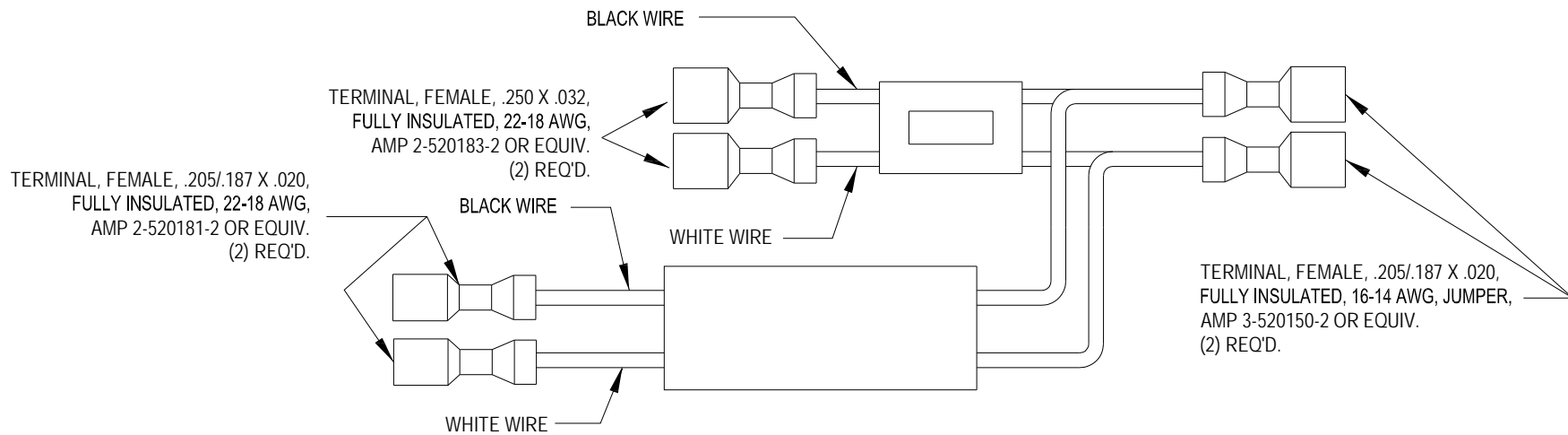
21584, HARNESS, 1.5" HELIX TRAY



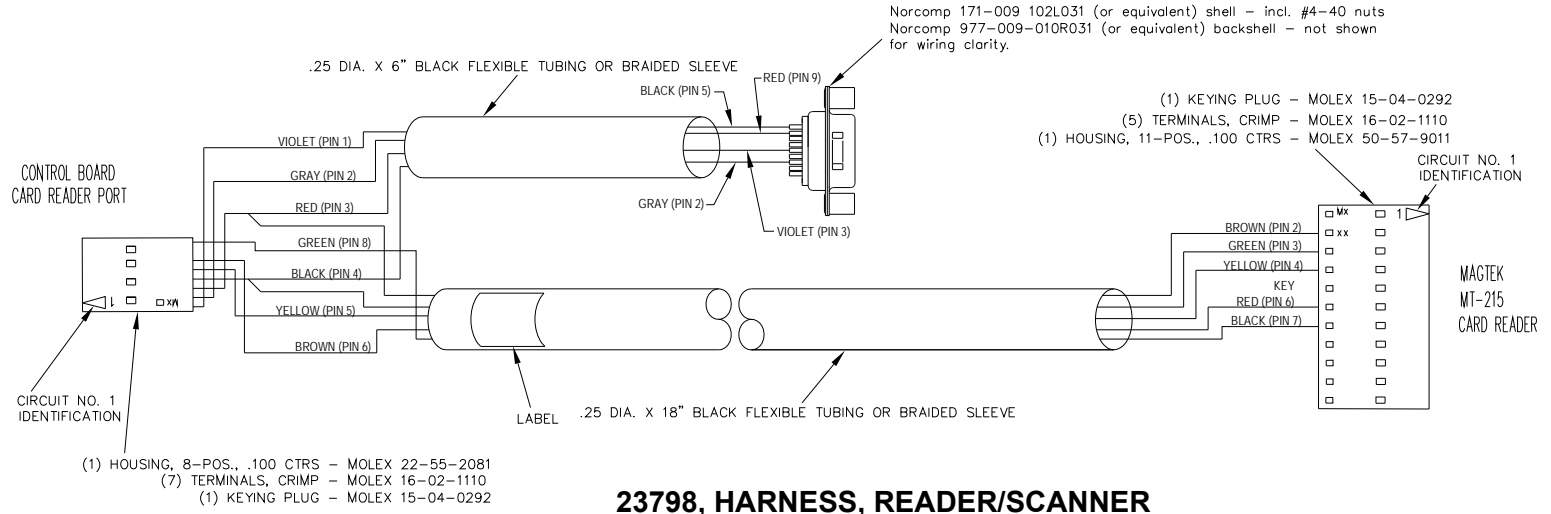
21591, HARNESS, CONTROL POWER AND DOOR SWITCH



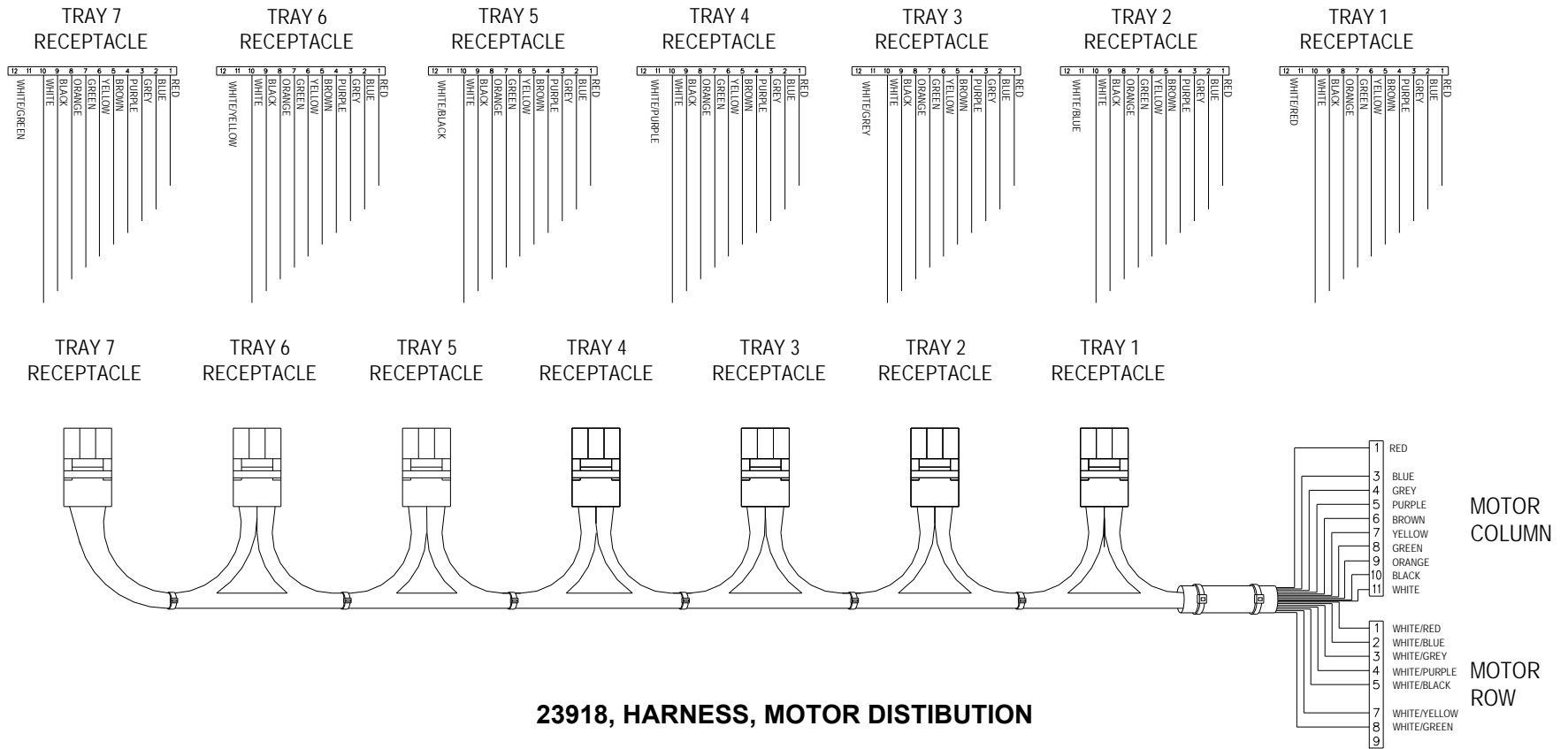
23085-02, HARNESS, CAT5 KEEPER



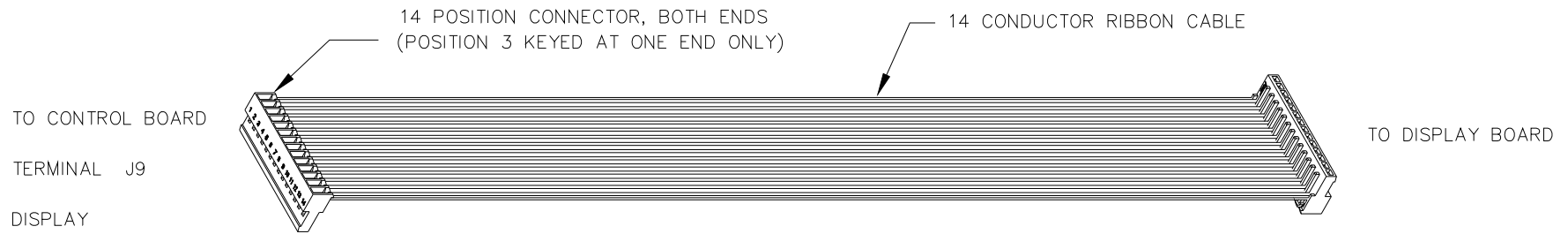
23625, HARNESS, DUAL TRANSFORMER, NO BALLAST



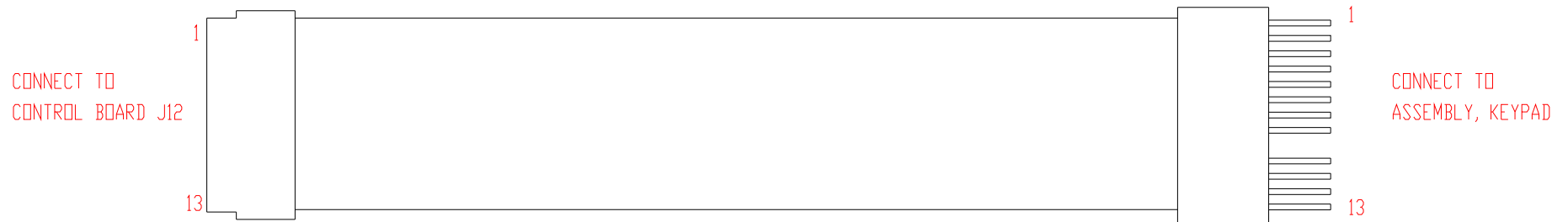
23798, HARNESS, READER/SCANNER



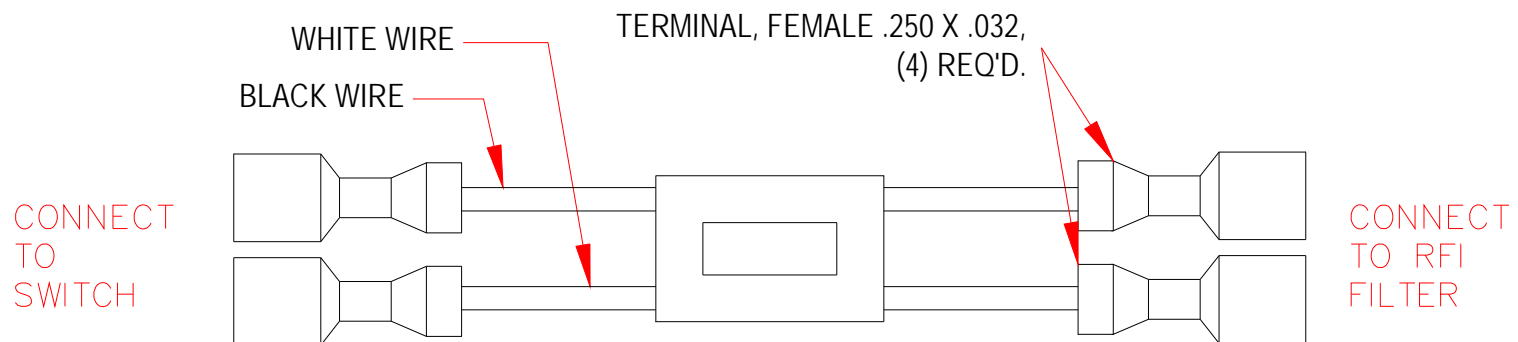
23918, HARNESS, MOTOR DISTRIBUTION



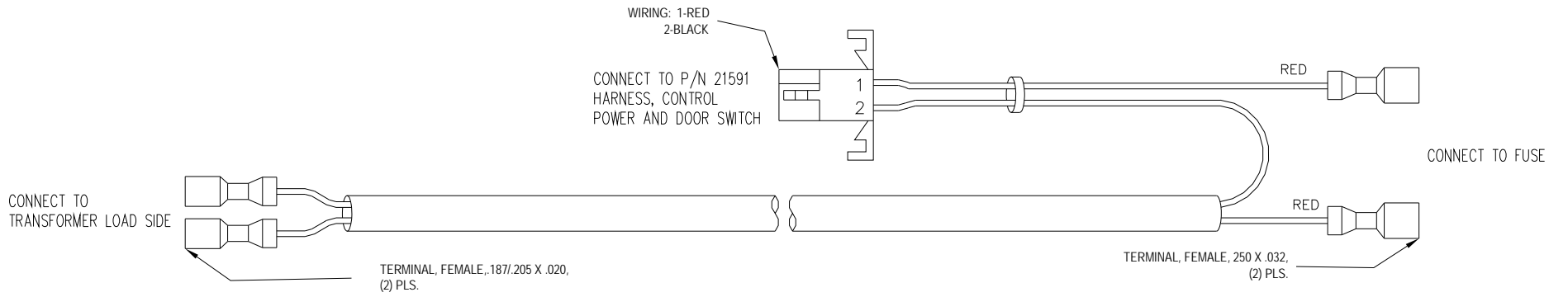
24015-01, HARNESS, DISPLAY



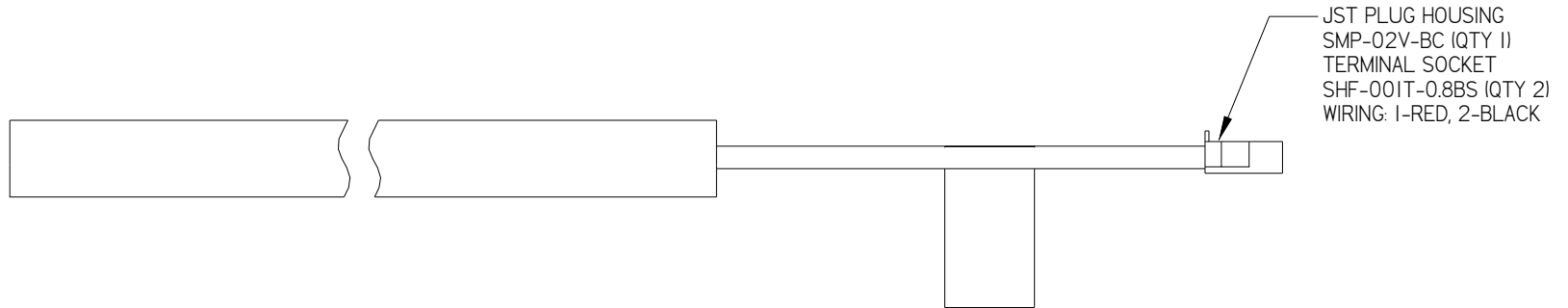
24578, HARNESS, KEYPAD EXTENSION, EPOCH



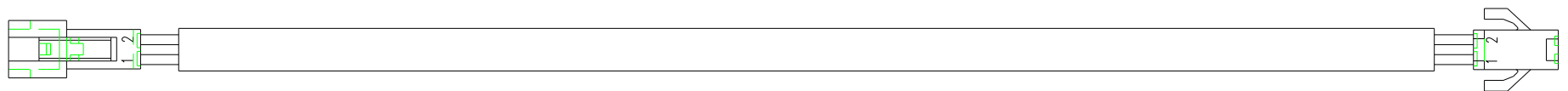
25561, HARNESS, SWITCH TO RFI FILTER, LOCKER SYSTEM



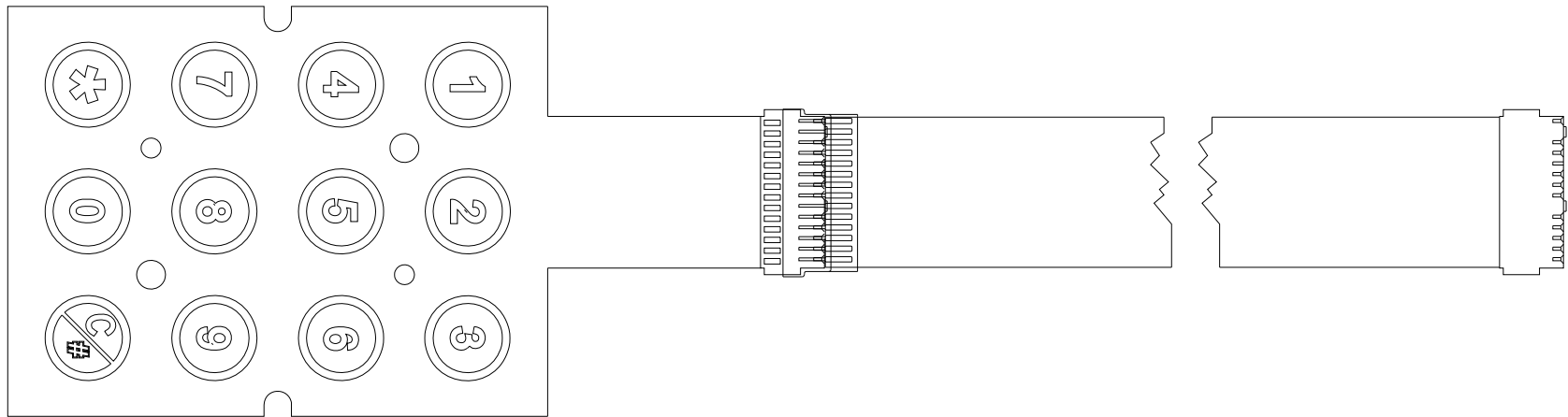
25562, HARNESS, TRANSFORMER AND FUSE, LOCKER SYSTEM



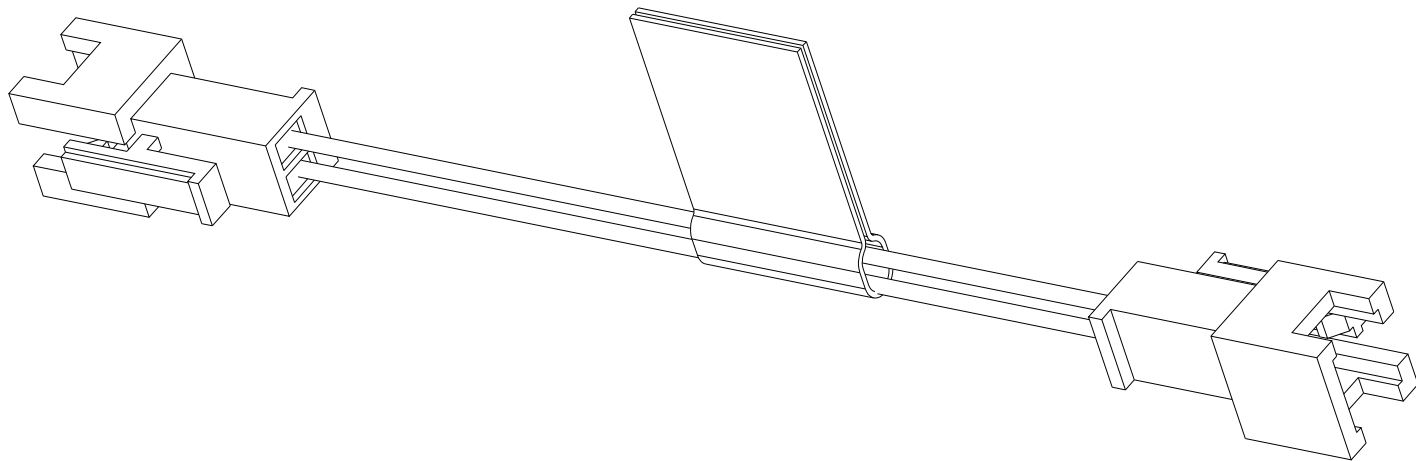
25628-01, LED LIGHTBAR, 24", (STRIPED—CLEAR)



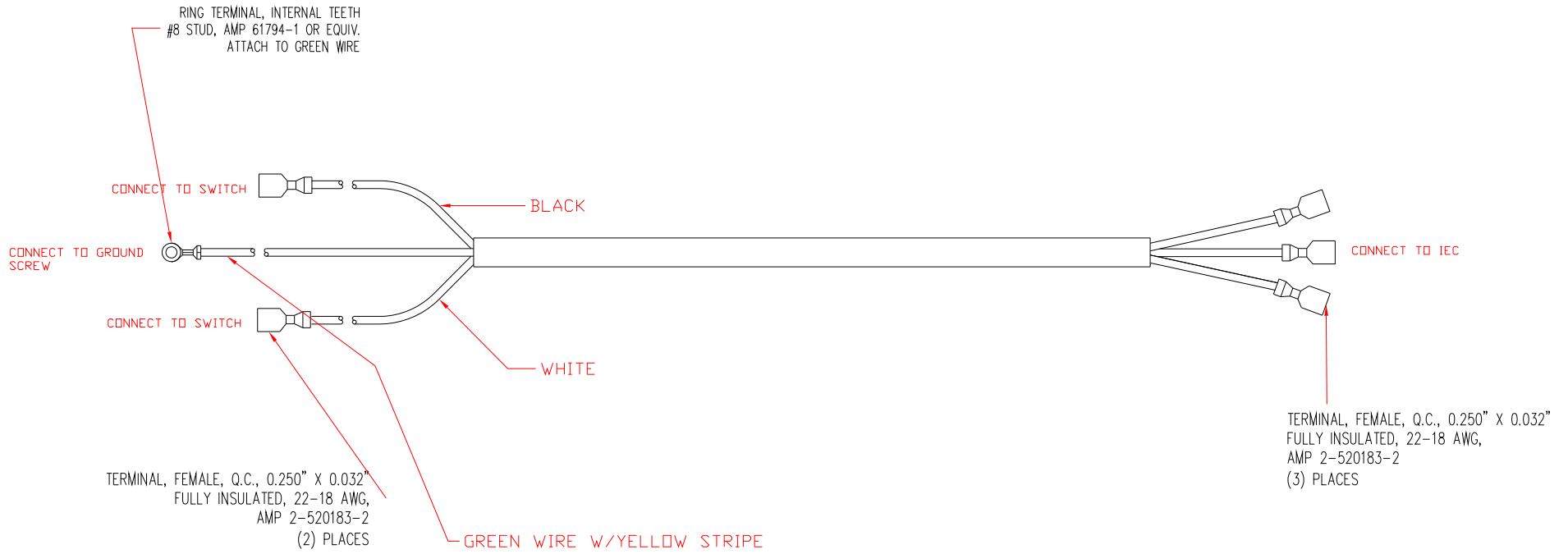
25641, HARNESS, LED, CONTROL MODULE, LOCKER SYSTEM



25688 ASSEMBLY, LIGHTED KEPAD

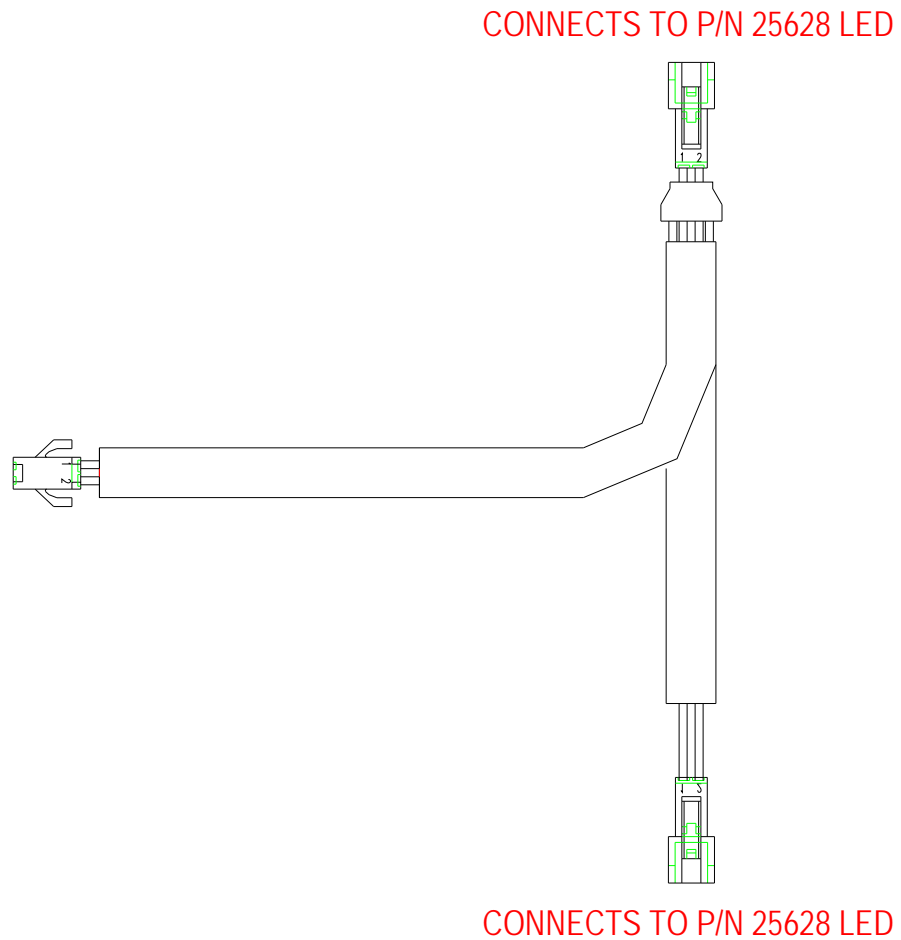


26519, HARNESS, CLEANLIFE GENDER CHANGER

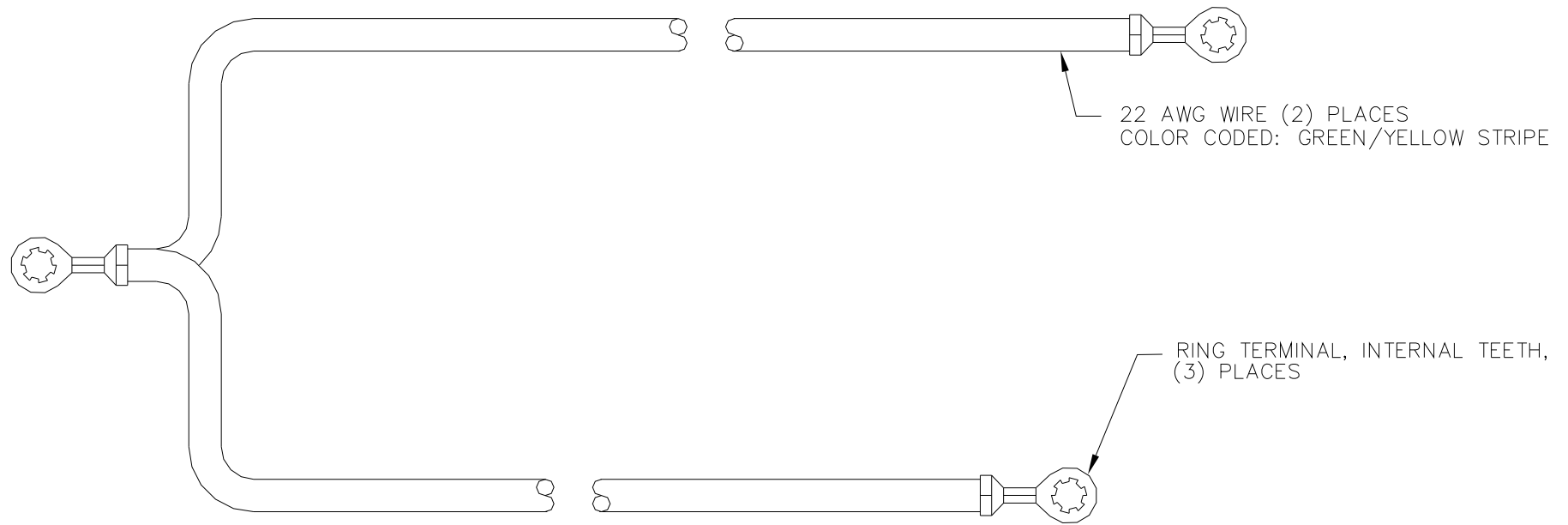


26636, HARNESS, POWER, MICROVEND

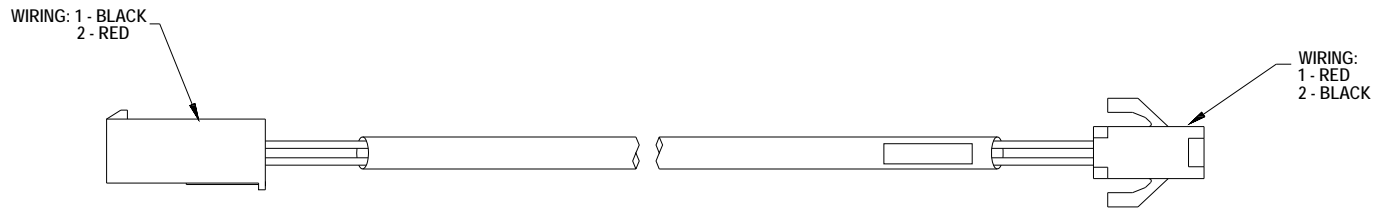
CONNECTS TO
P/N 25641 HARNESS, LED



26650, HARNESS, LED SPLITTER, MICROVEND



26974, HARNESS, GROUND, MICROVEND



27569, HARNESS ASSY., LED EXTENSION /ADAPTOR CLEANLIFE

ELECTRICAL HARNESSSES

PART NO.	PART DESCRIPTION	QTY.	NOTES
22402	Power Cord Assy., w/GFCI, 115V Domestic	1	
3173	Australia Power Cord	1	
3194	UK and Ireland Power Cord	1	
3208	India and Africa Power Cord	1	
20154	Harness, R.F.I. Filter Ground	1	
20158	Harness, Multi-Drop Bus	1	
21584	Harness, 1.5" Helix Tray	1	
21591	Harness, Control Power and Door Switch	1	
23085-02	Harness, Cat5 Keeper	1	
23625	Harness, Dual Transformer, No Ballast	1	
23798	Harness, Reader / Scanner,	1	
23918	Harness, Motor Distribution	1	
24015-01	Harness, Display, 23" Long	1	
24578	Harness, Keypad Extension, Epoch	1	
25561	Harness, Transformer, Locker System	1	
25562	Harness, Transformer and Fuse, Locker System	1	
25628-01	LED Lightbar, 24" (Striped Clear)	1	
25641	Harness, LED Control Module, Locker System	1	
25688	Assy., Lighted Keypad, 29"	1	
26519	Harness, CleanLife, Gender Changer	1	
26636	Harness, Power, MicroVend	1	
26650	Harness, LED splitter, microvend		
26974	Harness, Ground, MicroVend	1	
27569	Harness, LED Extension / Adaptor, CleanLife	1	

THIS PAGE INTENTIONALLY LEFT BLANK

THIS PAGE INTENTIONALLY LEFT BLANK

